



LEICHT+MÜLLER

MAKING THE  
**RIGHT MOVE**

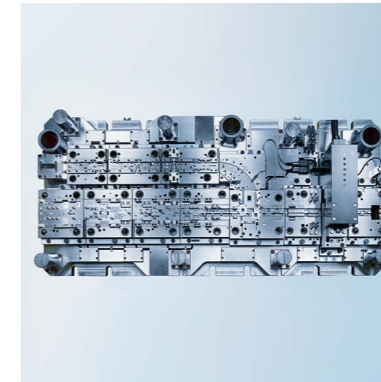
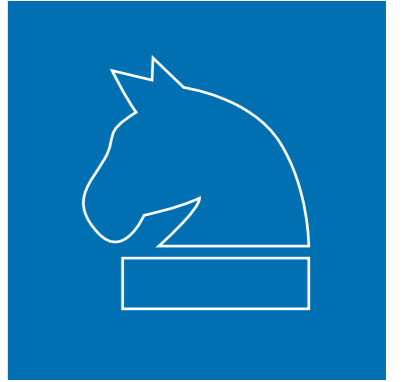
# A STRONG POSITIONING OPENS UP NEW PROSPECTS

AT LEICHT + MÜLLER WE ARE ABSOLUTELY CONVINCED THAT A SOLID POINT OF ORIGIN  
FORMS THE FOUNDATION FOR SUCCESS.

Our decades of experience in the manufacturing of stamping tools make us strong.  
That gives us the energy to offer you a wealth of options which is nearly unbeatable.  
Intent market observation, dynamic force of innovation and absolute customer focus  
complement our core skill. Those factors combined open up new prospects time and  
again, promising to bring you closer to success move by move.



**STAMPED  
PARTS**



**TOOLS**



**ASSEM-  
BLIES**





**THE HISTORY OF LEICHT + MÜLLER IS SETTING STANDARDS IN STAMPING TECHNOLOGY.**

Our on-going strategic goal has not only been to advance the industry, but to drive the advancement of our customers by providing highly precise stamping technology and innovative solutions. A well-proven concept. Today we are looking back upon pioneering innovations and toward a future of promising opportunities. Join us.

THINKING AHEAD AS A  
**PRINCIPLE OF SUCCESS**

**1985**

Heinz Leicht + Klaus Müller establish the company.

**1986**

Cut-Around-Technique for pin contacts sets new standards.

**1994**

The industry's first Single-Stage Production of multi-part stamped contacts including an integrated laser process.

**2005**

Foundation of "L+M Sycotec" plastics- and automation-technology. Fully automated assembly line.

**2013**

Change in the management board. Generational change initiated. Introduction of the Bihler-technology.

**2018**

L+M Sycotec moves into its own plant.

**2022**

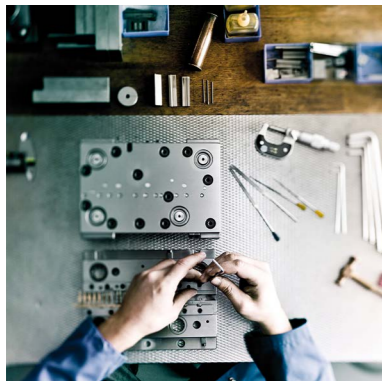
Change in the management board. Transition to the next generation completed.



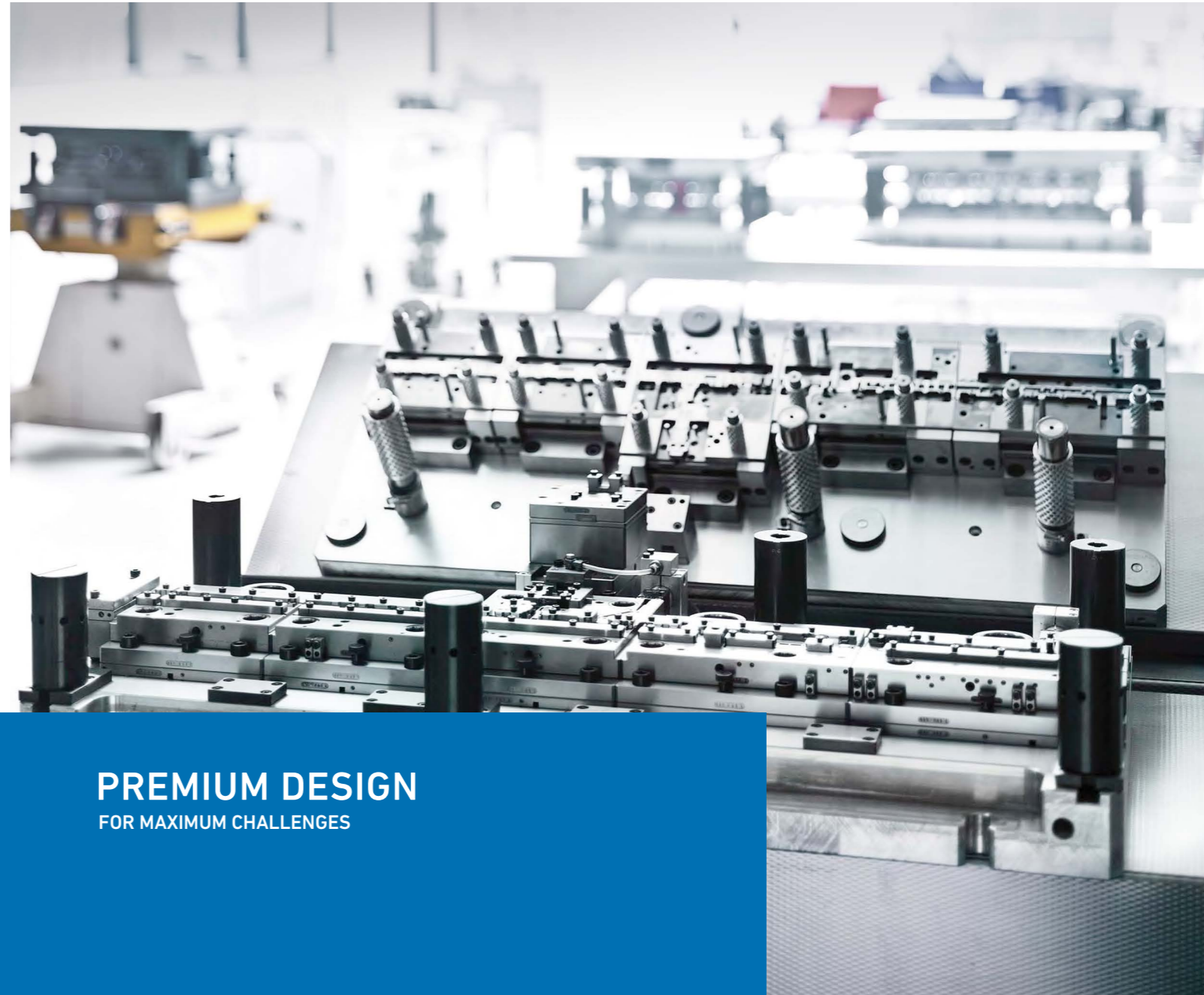
# A GOOD COMBINATION ON A SOLID FOUNDATION

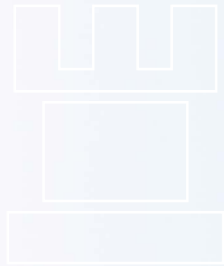
## TOOLING MANUFACTURE MARKS OUR ORIGINS.

It is our source of inspiration and a foundation of quality. An uncompromisingly high standard in all components throughout the entire vertical range of manufacturing formed the "L+M Modular System". This self-developed system optimizes serial production and performance. Adapted to individual requirements and specific needs, we can customize designs up to premium class. The well grounded and yet flexible structure provides process reliability at each step: from design to machining, assembly and testing, to production validation.



**PREMIUM DESIGN**  
FOR MAXIMUM CHALLENGES





## THINK CREATIVELY, **ACT DECISIVELY**

**GOOD IDEAS SHOW THEIR TRUE VALUE IN A COURAGEOUS IMPLEMENTATION.**

We advance with resolve, even in a complex environment. Our customers profit because the introduction of L+M developments can be the decisive move in the face of competition and to ensure market success. Single-Stage Production, special feeders, integrated laser technology, feed-in and assembly, cut-around technique for pin contacts or the automation of the stamping process: we face each task with creative solutions – move by move.

**HIGH-TECH**  
MULTI-PART  
STAMPED CONTACTS







## QUALITY ALWAYS CUTS A FINE FIGURE

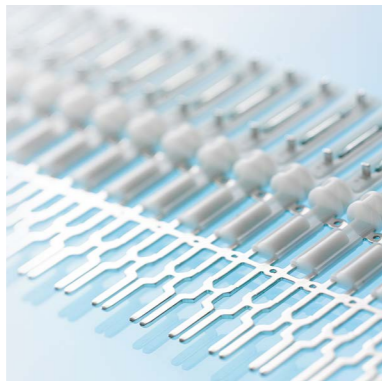
**STAMPED PARTS BY LEICHT + MÜLLER ARE ALWAYS A REWARDING MOVE.**

Equally precise and effective, each year hundreds of millions of stamped contacts are manufactured. The foundation for that form outstanding tools, a highly qualified team and the best equipment. BRUDERER stamping machines of 25 to 80 ton pressing force as well as sub-equipment on a level just as superior, deliver best results.

# PERFECT TEAM PLAY

STAMPING, INJECTION-MOLDING, ASSEMBLY, TESTING.

The manufacturing of hybrid parts and components as a one-stop supplier at one location is a promising move. L+M Stanztechnik and L+M Sycotec complement each other perfectly all along the line. Quick reaction time and competent problem solving are facilitated markedly through seamless communication and physical proximity: a clear advantage for our customers, as well as the profound know-how ranging from product design to tooling manufacture, mechanical engineering and all the way to serial production.

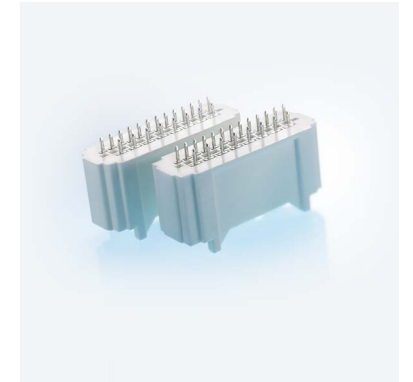




# SYNERGY THROUGH STRATEGY

## KNOW-HOW FUSES DIFFERENT WORLDS.

L+M Sycotec stands for the strategically conceived and resounding synergy of stamping and plastics technology. Our specialists design production lines exclusively for our serial production, which are implemented in our own mechanical engineering department in order to meet the challenges of both fields: a confident move that turns our customers into winners.



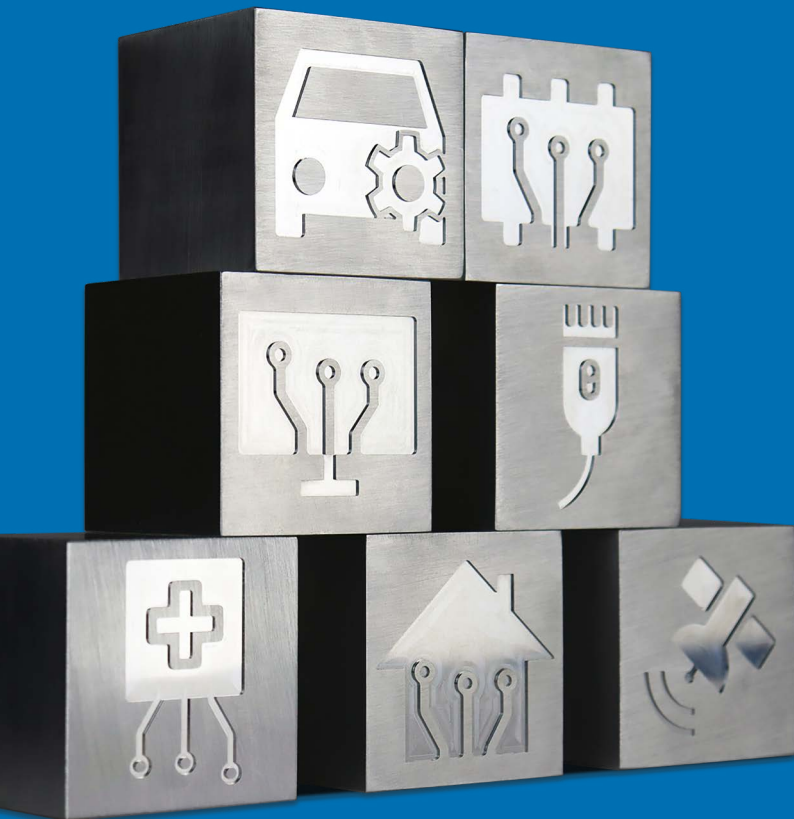
# FLEXIBILITY AS A CONCEPT FOR THE FUTURE

## BIHLER NC-TECHNOLOGY ENSURES AN EVEN STRONGER POSITIONING.

With the flexible NC-manufacturing and assembly system Bimeric we can implement hybrid assembly projects. Stamping and bending, assembly of plastic parts and other components, measuring and testing – for every task the appropriate configuration can be created. We have made our choice, now it is your move.



# High-precision tools, stamped parts, electronic components



**WELL VERSED IN MANY INDUSTRIES.**

**LEICHT + MÜLLER STANZTECHNIK GMBH + CO. KG**

Daimlerstraße 14 | 75196 Remchingen | Germany  
Phone +49 (0) 7232 3686-0 | Fax +49 (0) 7232 3686-36  
info@leicht-mueller.de | www.leicht-mueller.de

**LEICHT + MÜLLER SYSCOTEC GMBH**

Billäcker 7 | 75196 Remchingen | Germany  
Phone +49 (0) 7232 3686-0 | Fax +49 (0) 7232 3686-461  
info@leicht-mueller.de | www.leicht-mueller.de